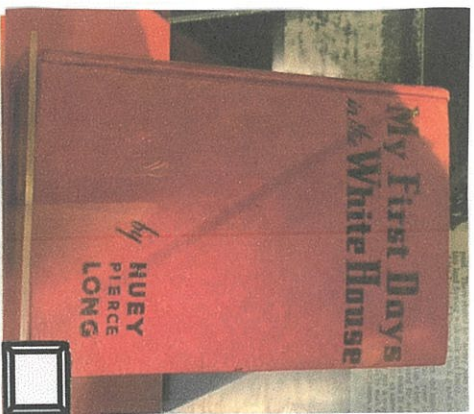




# Color Scavenger Hunt



Put a check in the item's box when you find it!



It's Red



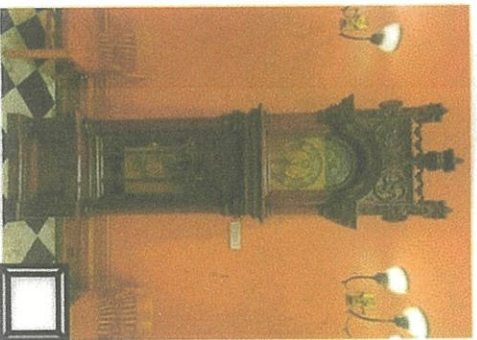
It's Grey



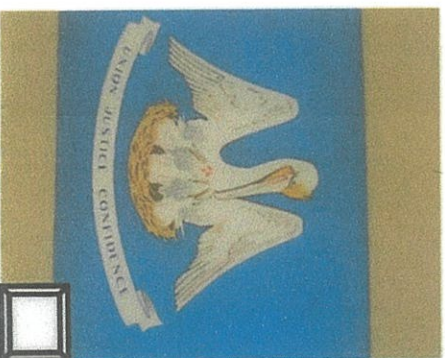
It's Green



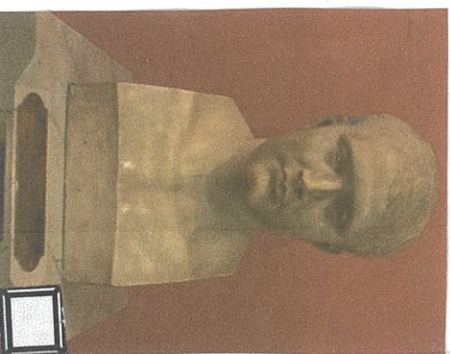
It's Gold



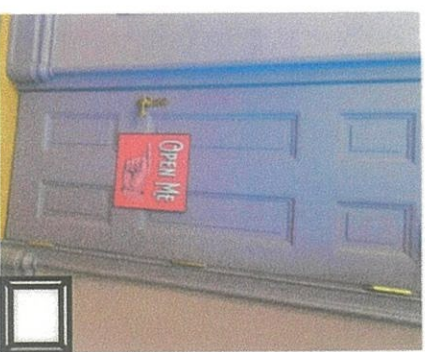
It's Brown



It's Blue



It's White



It's Purple



LOUISIANA'S  
OLD STATE CAPITOL

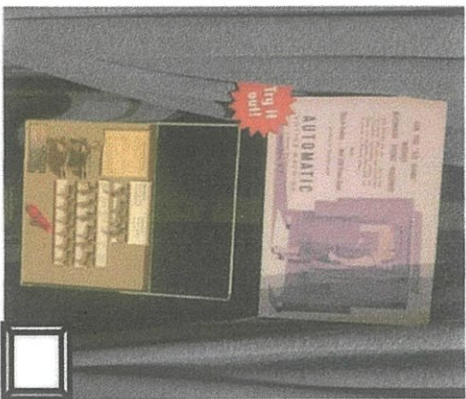




# Alphabet Scavenger Hunt



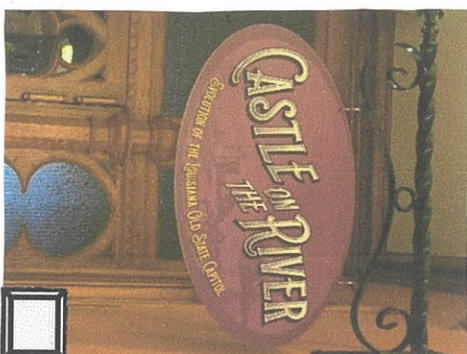
Put a check in the item's box when you find it! Don't forget to look high and low!



Aa



Bb



Cc



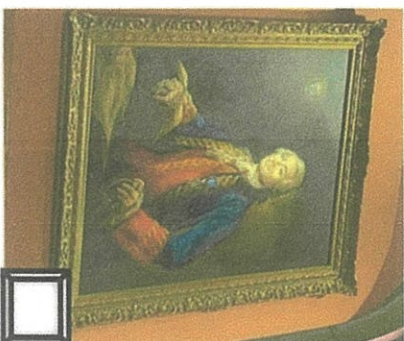
Dd



Ee



Ff



Gg



Hh



LOUISIANA'S  
OLD STATE CAPITOL



# Shape Scavenger Hunt



Put a check in the item's box when you find it!



**Small Spiral**

Ammonite Fossil



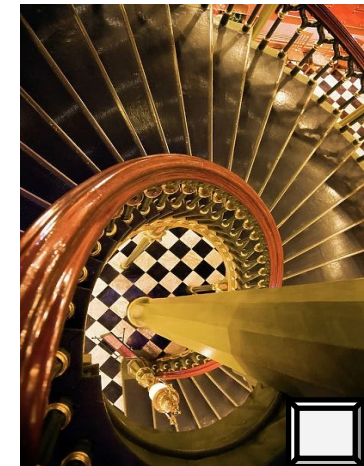
**Rectangle**

Earl K. Long Safe



**Quatrefoil**

Gothic Symbol



**Large Spiral**

Staircase



**Circle**

Magnifying Glass



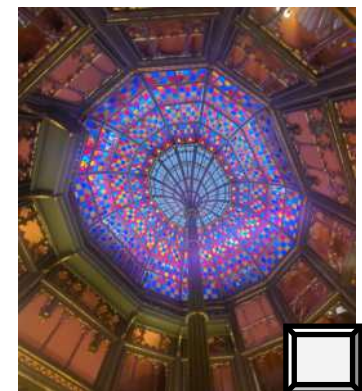
**Oval**

James Dakin Portrait



**Stars**

*"Demokratia"*



**Dome**

Stain glass



LOUISIANA'S  
**OLD STATE CAPITOL**