



Alphabet Scavenger Hunt



Put a check in the item's box when you find it! Don't forget to look high and low!



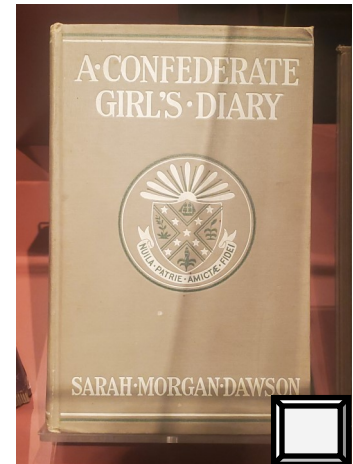
Aa



Bb



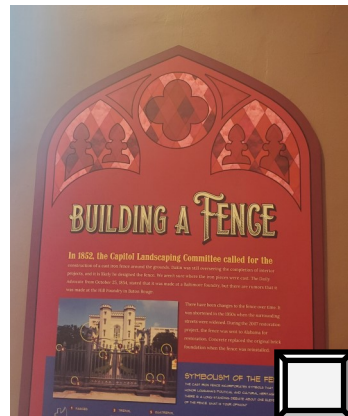
Cc



Dd



Ee



Ff



Gg



Hh



LOUISIANA'S
OLD STATE CAPITOL



Shape Scavenger Hunt



Put a check in the item's box when you find it!



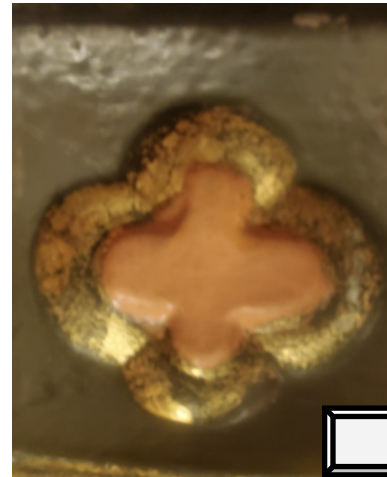
Small Spiral

Ammonite Fossil



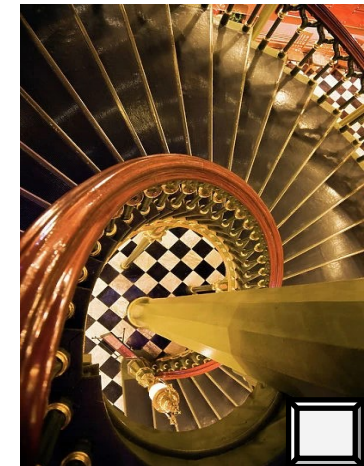
Rectangle

Earl K. Long Safe



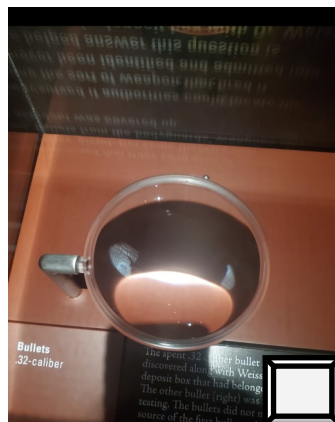
Quatrefoil

Gothic Symbol



Large Spiral

Staircase



Circle

Magnifying Glass



Oval

James Dakin Portrait



Stars

"Demokratia"



Dome

Stain glass



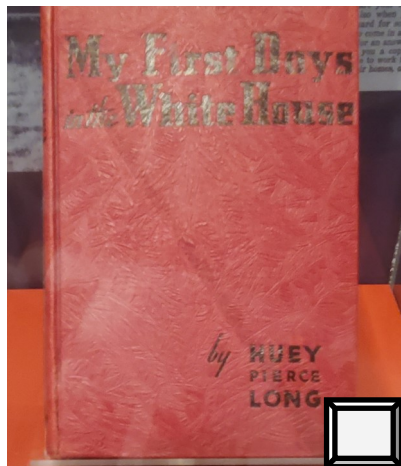
LOUISIANA'S
OLD STATE CAPITOL



Color Scavenger Hunt



Put a check in the item's box when you find it!



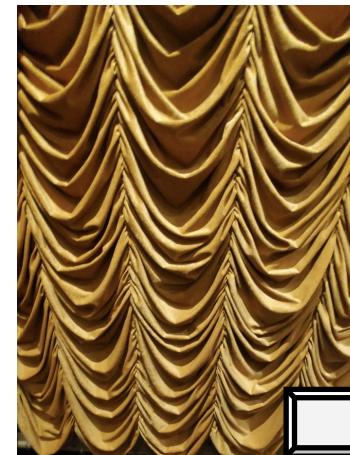
It's Red



It's Grey



It's Green



It's Gold



It's Brown



It's Blue



It's White



It's Purple



LOUISIANA'S
OLD STATE CAPITOL